



美亨實業有限公司
MILLION HOPE INDUSTRIES LIMITED
專業生產 ALUMINIUM FABRICATOR SCHÜCO



美興新型建築材料(惠州)有限公司
MILLION HOPE NEW-TECH BUILDING SUPPLIES (HUIZHOU) LIMITED

A L U M I N I U M F A B R I C A T O R

Specialist in:

- Curtain Wall System
- Glass Wall System
- Architectural Panel
- Skylight
- Canopy
- Shopfront
- Slid Folding Door
- Sliding Door
- Window and Door

MILLION HOPE INDUSTRIES LIMITED



*million hope and million future,
we provided the best service to our customers*

A member of Hanison Construction Holdings Limited



Beacon Hill

content

INTRODUCTION

HISTORY AND MISSION

ONE-STOP SOLUTION - TECHNOLOGY & EXPERTISE

ENGINEERING, FABRICATION & INSTALLATION

OPERATION & PRODUCTION LINE^(FACTORY IN MAINLAND)

QUALITY CONTROL, ENVIRONMENTAL ISSUES, SAFETY ISSUES

LICENSES & CERTIFICATION

SCHÜCO

REFERENCE PROJECTS

HONG KONG

- *Cyberport R3b*
- *St. Teresa's Hospital*
- *Mount Beacon*
- *Cyberport R4b*
- *No. 3-5 Plunkett's Road*
- *Beacon Hill*
- *New Town Plaza*
- *No. 256 Hennessy Road*
- *Palazzo*
- *The Open University of HK*
- *Resort Hotel in Discovery Bay*
- *No.1 La Salle Road*
- *No. 57 South Bay Road*
- *Caritas Bianchi College of Careers*
- *No. 33 Cameron Road*
- *No. 8 College Road*

CHINA

-
-
- *中山香格里拉酒店*
-

WORK IN PROGRESS

- *Choi Wan Road*
- *Babington Road*
- *Queen Road East*
- *Ma Wo*
- *South Bay Close*
- *Discovery Bay Phase 14*
- *Wood Road*

Million Hope

Introduction



HISTORY

Million Hope Industries Ltd. was established in 1990. With nearly 20 years of experience in the design, manufacture and installation of aluminium fixtures, we work closely with architects and clients to offer innovative solutions. We tailor-made our aluminium products and transformed them into many of the unique architectural features in the modern buildings that our clients and architects are proud of. On the other hand, our clients value our professional attitude and innovation with effective and efficient solutions, and we have a track record of timely delivery with high quality workmanship. Moving forward, Million Hope will continue to be a partner to clients, providing hassle-free and competitive solutions, collaborating with our clients to turn ideas on from drawing-board to remarkable landmarks.

Building success upon success, Million Hope has expanded its client portfolio, ranging from prestigious private developments to public works projects, cultivating its reputation and work base in Hong Kong as well as Southern China.

In addition to tailor-made, boutique type designs and products, Million Hope also offers its own aluminium window products and solutions to suit local needs. Through a close working relationship with our partner Schuco, Germany's largest and Europe's leading

specialist in multi-functional building envelopes, renowned in Hong Kong and China, Million Hope has developed an extensive knowledge base in design and fabrication of quality aluminium fixtures. In order to ensure the quality of its products and services, Million Hope has set up a fabrication plant in Huizhou City to manufacture unitized aluminium curtain walls, windows, doors, facades, balconies, security and solar energy systems as well as electronic windows and shading systems. The plant is ISO 9001 certified by the HKQAA.

Hanison Construction Holdings Limited, a prominent construction company listed on the Hong Kong Stock Exchange, acquired Million Hope in 2007 and has since synergized the expertise of both companies to further expand and refine the operations of Million Hope.

Our management will continue the traditional spirit of collaboration with architects and clients. Million Hope is capitalizing on the investment from Hanison to advance production efficiency and reduce cost through research, re-engineering and innovations. Through this approach, Million Hope is able to offer a better value of services to our clients while generating promising growth in the future.

Mission

We are committed to serving our clients with passion, and continue to offer innovative solutions and quality service to meet our customers' needs in the ever changing, ever shifting world.



ENGINEERING

ONE STOP

TECHNOLOGY & EXPERTISE

A full supporting team of design experts act as the foundation stone of each of our projects.

For years, we have ceaselessly provided valuable and cogent advice and solutions to our clients and conveyed designers' distinguishing intents to the as-built landmarks within the districts.



FABRICATION



Our factory is equipped with the most advanced machineries and, under the supervision of highly experienced technicians, we are able to fabricate and tailor-make our products to the satisfy our clients' demands in both quality and effectiveness.





Long-term

working relationships with our sub-contractors is one of the factors behind our project team's success. Together with the responsible site supervisory staffs, we consistently deliver excellent products to our clients' delight.



China Factory 100% owned by **Million Hope Industries Limited**



QUALITY CONTROL



To achieve world class standards, the company always ensures the implementation of the quality system effectively complies with the ISO9001 standards and promptly delivers our products with the controlled professionalism and efficiency. We also follow the "Plan-Do-Check-Act" cycle to continually improve our quality management system.



ENVIRONMENTAL ISSUES

acid rain
destroys
our earth

save
our
planet

With regards to our overall corporate philosophy of treasuring our environment, we go to great lengths during our management of a project to:

- 1) Assess and control the environmental risks during the construction process.
- 2) Identify the environmental impacts within the construction process.
- 3) Implement any and all precautionary measures to minimize the adverse effects on air quality, noise, watery quality and waste and resource consumption.

SAFETY ISSUES



It is our objective to operate in accordance with all regulations and bylaws, as well as to provide a safe working environment for our workers.

We have set up safety procedures to ensure our works are executed in a safe manner and our management also provides appropriate training and clear instructions to our staff on “Safety First”.

Certificate No: CC 1054



This is to certify that the Quality Management System of

MILLION HOPE INDUSTRIES LTD.

Unit 1 2/F Block A Shatin Industrial Centre 5-7 Yuen Shun Circuit Shatin New Territories Hong Kong

(The certification locations and scopes are listed in Appendix)

*complies with the requirements of ISO 9001 : 2008 quality management system standard,
applicable to:*

**Design, manufacture and installation project management
of aluminium curtain wall and window**

*The certificate remains valid subject to satisfactory maintenance of the system
which will be monitored by Hong Kong Quality Assurance Agency.*

Signed for and on behalf of
HONG KONG QUALITY ASSURANCE AGENCY



Executive Director

Director



Registered address 19/F K. Wah Centre 191 Java Road North Point Hong Kong Tel (852) 2202 9111 Fax (852) 2202 9222
Note In accordance with the Agency Regulations, the Hong Kong Quality Assurance Agency undertakes no liability or responsibility for any product or service supplied by the organization in accordance with the requirements of this Certification Scheme. The use of the Accreditation mark(s) shown on this certificate (if applicable) indicates accreditation in respect of those activities covered by that Accreditation Authority. This certificate remains the property of HKQAA and shall be returned when required by the Agency. Further clarifications regarding the scope of this certificate and the applicability of ISO 9001 : 2008 requirements may be obtained by consulting the organization.

Original Certification 24 February 1998
Renewal /Extension 30 April 2009

Expiry 23 February 2010
This amendment 30 April 2009

HKQAA F524 Rev4

Urkunde

SCHÜCO 特许生产授权书

兹授予

香港美亨實業有限公司 (鋁質工程)


沙田源順圍 5-7 號, 沙田工業中心, A 座 2 樓 1 室
Unit 1, 2/F, Block A, Shatin Ind. Centre, 5-7 Yuen Shun
Circuit, Shatin, N.T. HK

为 SCHÜCO “旭格” 产品 (门窗、幕墙、采光棚等) 特许
生产企业。授权生产、安装 SCHÜCO “旭格” 品牌门窗、
幕墙、采光棚等产品。该企业严格按照 SCHÜCO “旭格”
品牌门窗、幕墙生产、安装指南进行生产、安装。

有效期: 2008 年 8 月 1 日至 2010 年 7 月 31 日

总经理: 赵国臣 (工学博士)



 旭格幕墙门窗系统 (北京) 有限公司
北京市顺义区天竺空港工业区 B 安祥大街甲三号, 101300

SCHÜCO
德国旭格国际集团

SCHÜCO **THE WORLD'S** **LEADING** **SPECIALIST IN** **ALUMINIUM** **FACADE**

SLIDING FOLDING DOOR SYSTEM
SLIDING DOOR SYSTEM
WINDOW & DOOR SYSTEM



Reference PROJECTS

HONG KONG

- *Cyberport R3b*
- *St. Teresa's Hospital*
- *Mount Beacon*
- *Cyberport R4b*
- *No. 3-5 Plunkett's Road*
- *Beacon Hill*
- *New Town Plaza*
- *No. 256 Hennessy Road*
- *Palazzo*
- *The Open University of HK*
- *Resort Hotel in Discovery Bay*
- *No.1 La Salle Road*
- *No. 57 South Bay Road*
- *Caritas Bianchi College of Careers*
- *No. 33 Cameron Road*
- *No. 8 College Road*

CHINA

-
-
-
- *中山香格里拉酒店*
-

WORK IN PROGRESS

- *Choi Wan Road*
- *Babington Road*
- *Queen Road East*
- *Ma Wo*
- *South Bay Close*
- *Discovery Bay Phase 14*
- *Wood Road*

HONG KONG





Project Title: Domestic Subcontract for Cyberport R3b
Client / Main Contractor: China State – China Resources
Construction Joint Venture
Scope of Works: Design, Supply and Installation of Aluminium Windows and
Sliding Doors

Cyberport R3b 數碼港發展第三期B



St. Teresa's Hospital 九龍法國醫院



Project Title: Redevelopment of St. Teresa's Hospital at, Kowloon 327 Prince Edward Road West

Main Contractor: Ngo Kee Construction Co., Ltd.

Architect: P & T Architects and Engineers Ltd.

Scope of Works: Design; supply and installation of aluminium window, window wall, canopy, glazed roof and balustrade. Glazing included.



Project Title: N.K.I.L 6196, 20 Cornwall Street, Kowloon Tong, Kowloon (Mount Beacon)
Client: Direct Win Development Ltd. c/o Sino Group
Architect: Wong Tung & Partners Ltd.
Scope of Works: Design, Supply and Installation of SCHUCO RS65 aluminium window, RS70F Bi-fold door and Glazing included.

Mount Beacon 畢架山峰

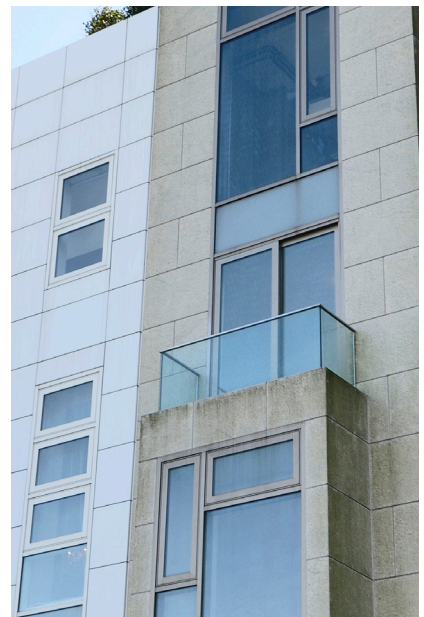


Project Title: Phase RIVb of Cyberport Residential Development at Telegraph Bay, Hong Kong
Client: Pacific Century Premium Developments Limited
Main Contractor: Paul Y. Construction Co., Ltd.
Architect: Wong & Ouyang (HK) Ltd.
Scope of Works: Design, Supply and Installation of SCHUCO Aluminium Window and Sliding Door, Glazing Include.

Cyberport R4b 數碼港發展第四期B



No. 3-5 Plunkett's Road 賓吉道3至5號



Project Title:	Nominated Sub-Contract for No. 3-5 Plunkett's Road, The Peak, Hong Kong
Client:	Tai Cheong Group
Main Contractor:	Wang Yip Construction Co., Ltd.
Architect:	P & T Architects and Engineers Ltd.
Engineers:	P & T Structural and Engineers Ltd.
Scope of Works:	Design, Supply and Installation of "SCHÜCO" Windows, Curtain Walls, Louvres, External Metal and Stone Claddings



Project Title: Proposed Residential Redevelopment at 43-45 Beacon Hill Road, Kowloon, Lot No. 4763

Client: Kwok Hing Investment Co., Ltd.

Main Contractor: Wah Seng General Contractors Ltd.

Architect: Wong Tung & Partners Ltd.

Scope of Works: Glass Walls, Canopies, Claddings, Skylights, Windows, Louvre, Metal Works and Glazing Installation

Beacon Hill 畢架山道

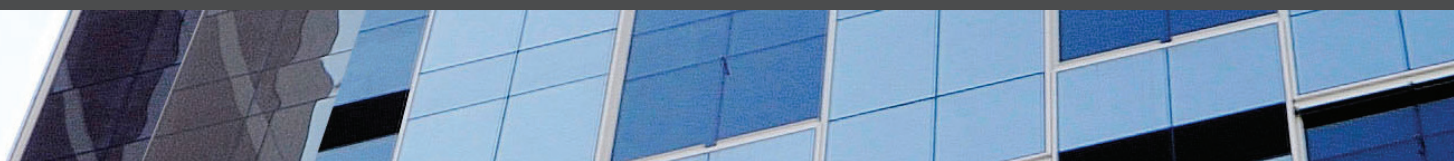


Project Title: New Town Plaza III, S.T.T.L. 143, Shatin, N.T. (A&A works)
Client: Sun Hung Kai Engineering Co., Ltd
Main Contractor: Sanko Construction Co. Ltd.
Architect: Sun Hung Kai Engineering Co., Ltd
Scope of Works: Supply and Installation of "SCHUCO" RS160+ Sliding Door at Level 1 and Aluminium Capping to window mullion at Level 2 to Level 6

New Town Plaza 新城市廣場



No. 256 Hennessy Road 軒尼詩道256號

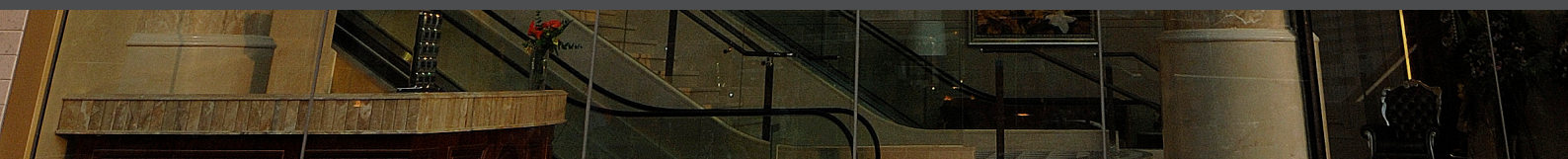




Project Title:	Proposed Commercial Building on I.L 2769 s.b at No. 256 Hennessy Road, HK
Location:	Section B of I.L 2769, 256 Hennessy Road, Wan Chai, HK
Client:	Wise Century Ltd
Main Contractor:	Cheung Kee Fung Cheung Construction Co., Ltd.
Architect:	WMKY Ltd. / CL3
Scope of Works:	External Curtain Wall / Glass Wall / Windows / Louvres / Cladding Installation



Palazzo 御龍山

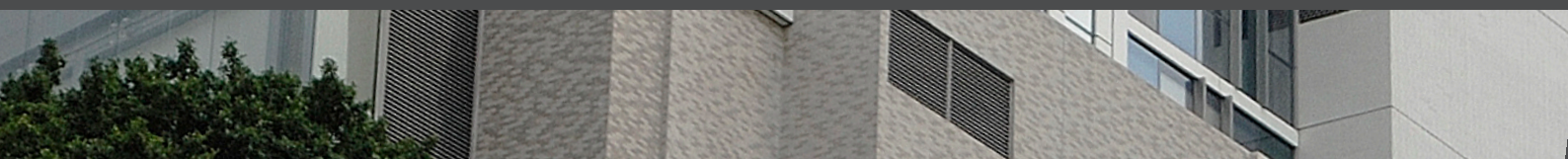




Project Title:	S.T.T.L. 470 Ho Tung Lau (Site A) Development, Shatin, N.T.
Client:	Full Fair Ltd. c/o Sino Group
Main Contractor:	Hip Hing Construction Co., Ltd.
Architect:	Ronald Lu & Partner (HK) Ltd.
Engineers:	Wong & Cheng Consulting Engineers Ltd.
Scope of Works:	Design, Supply and Installation of Podium Glazing & Aluminium Cladding Works

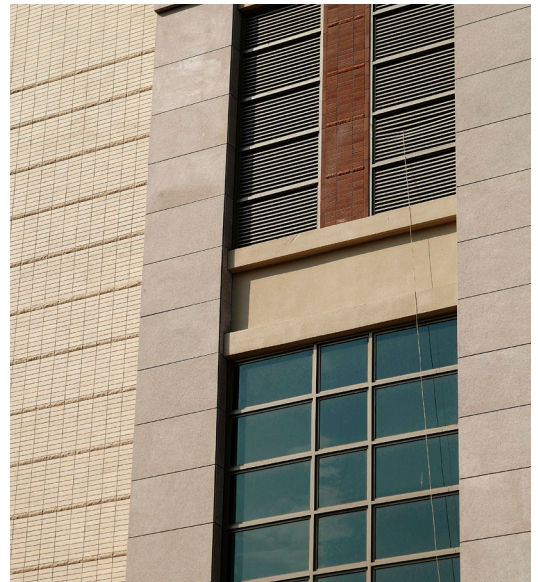


The Open University of HK 香港公開大學





Project Title:	The Open University of Hong Kong – Phase Two (Stage 1) Extension
Client:	The Open University of Hong Kong
Main Contractor:	New House Construction Co., Ltd.
Architect:	Urbanage Design Ltd.
Scope of Works:	Design, Supply and Installation of Curtain Wall and Glass Wall



Project Title: Discovery Bay North Development Lot No. R.P. of Lot 385 IN DD 352 and Extension
Client: Hong Kong Resort Company Limited
Main Contractor: Hanison Contractors Limited
Architect: Simon Kwan Architect Ltd.
Scope of Works: Design, Supply and Installation of Aluminium Windows, Sliding Doors, Glazed Installation

Resort Hotel in Discovery Bay 愉景灣酒店



Project Title: Residential Redevelopment at No. 1 & 1E La Salle Road, Kowloon Tong, Kowloon
Client: Poly Rising Development Limited
Main Contractor: Hip Hing – Hanison Joint Venture
Architect: Intergrated Design Associates Architects Ltd.
Engineers: Wong Pak Lam & Associates Ltd.
Scope of Works: Design, Supply and Installation of Curtain Wall, Glazing Parapet and Wall Cladding

No.1 LaSalle Road 喇沙利道1號



Project Title: A & A Works to Belgravia at 57 South Bay Road, Hong Kong
Client: Kerry Properties Ltd.
Main Contractor: Hong Kong Construction (General Builders) Ltd.
Architect: Ma Leung Architect Ltd.
Scope of Works: Design, Supply and Installation of Aluminium Windows, Sliding Doors, Glazed Installation

Belgravia, NO. 57 South Bay Road 南灣道57號



Project Title: Caritas Bianchi College of Careers at Tseung Kwan O Town
Lot No. 92, Area 73B, Tseung Kwan O

Client: Caritas Bianchi College of Careers

Main Contractor: Chinney Construction Co., Ltd.

Architect: Chung Wah Nan Architect Ltd.

Engineers: Meinhardt China

Scope of Works: Design, Supply and Installation of Unitize Curtain Wall System, Glass Wall, Window and Louvre

Caritas Bianchi College of Careers 白英奇書院



Project Title: Office / Commercial Development at No. 33 Cameron Road,
Tsim Sha Tsui, Kowloon.
Client: Lammington Investment Holdings Ltd.
Main Contractor: Hanison Construction Co. Ltd.
Architect: Intergrated Design Associates Architects Ltd.
Engineers: P & T Architects and Engineers Ltd.
Scope of Works: Design, Supply and Installation of Curtain Wall and Glass Wall



No. 33 Cameron Road 金馬倫道33號





Project Title: Proposed Residential Redevelopment at No. 8 College Road, Kowloon Tong, Kowloon.

Client: Hanison Construction Co., Ltd.

Main Contractor: Hanison Interior & Renovation Ltd.

Architect: Steve Leung Architects Ltd.

Scope of Works: Design, Supply and Installation of Aluminium Windows, Sliding Door, Curtain Wall

No. 8 College Road 書院道8號

CHINA



fl

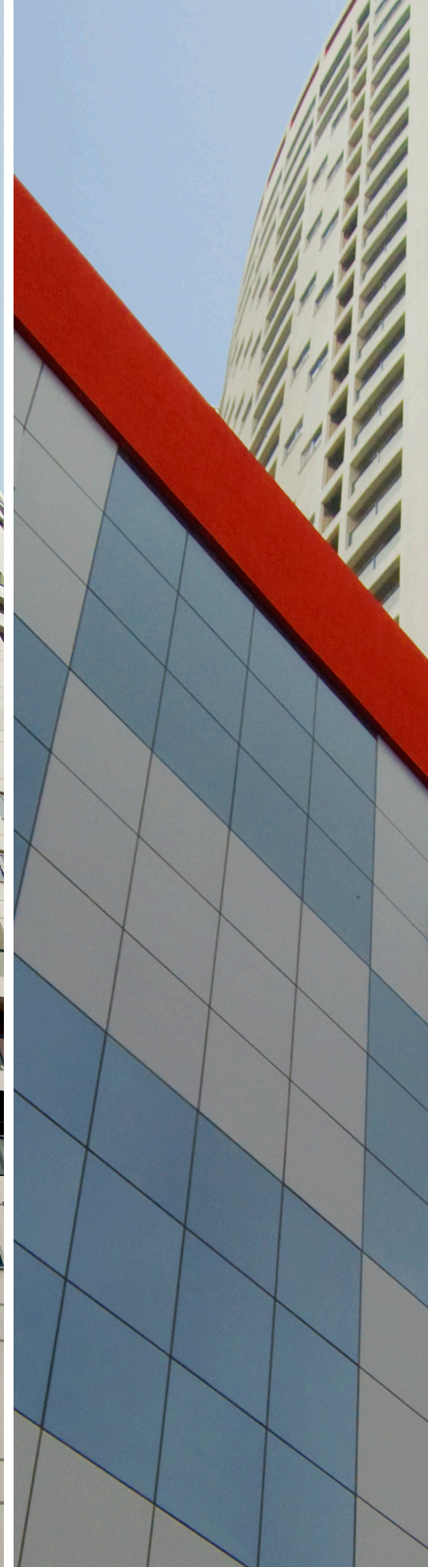
匕



工程名稱： 松山湖商務區、圖書館、理工學院
工程項目： 設計及安裝防火窗
發展商： 廣東建安集團有限公司



中山香格里拉酒店



WORK IN PROGRESS



Project Title: Choi Wan Road Development Site 2 & Sau Mau Ping Phase 12 (District Open Space) and Public Housing Development at Ex-Chai Wan Estate

Client: Housing Authority

Main Contractor: Hanison Construction Co., Ltd.

Architect: Housing Authority

Scope of Works: Design, Supply and Installation of Natural Anodized Aluminium Windows



Project Title: Proposed Residential Development at 6D – 6E Babington Path, Mid-Level, Hong Kong.

Client: Wharft Development Ltd.

Main Contractor: Hien Lee Engineering Co., Ltd.

Architect: CYS Architect Ltd.

Scope of Works: Design, Supply and Installation of Aluminium Windows, Sliding Doors, Glazed Installation



Project Title: Proposed Residential Development at No.235-245 Queen's Road East, Wan Chai, Hong Kong

Client: Nam Wai Development Ltd. c/o Nam Fung Group

Main Contractor: Bordon Construction Co., Ltd.

Architect: MLA Architect Ltd.

Scope of Works: Design, Supply and Installation of Aluminium Curtain Wall, Windows, Sliding Door, Window Wall and Cladding system



Project Title: Proposed Residential Redevelopment at TPTL 179 Ma Wo, Tai Po, N.T.

Client: Dragon (Hong Kong) Ltd. c/o Sino Group

Main Contractor: Cheung Kee Fung Cheung Construction Co., Ltd.

Architect: Simon Kwan Architect Ltd.

Scope of Works: Design, Supply and Installation of Aluminium Windows, Sliding Door, Window Wall and Cladding system



Project Title: Proposed Residential Redevelopment at R.B. L.833 & R.B.L. 820 at No.5-11 & 13-19 South Bay Close, Hong Kong,

Client: Chit Sen Co., Ltd.

Main Contractor: New House Construction Co., Ltd.

Architect: BC&A Architects Ltd.

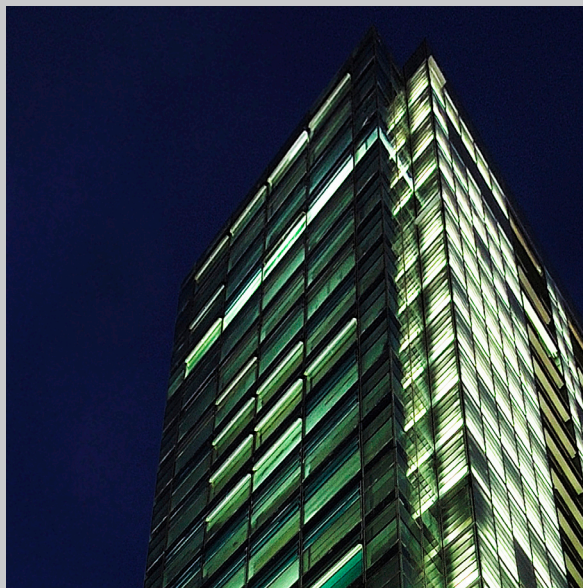
Scope of Works: Design, Supply and Installation of Aluminium Curtain Wall, Windows, Sliding Door, Window Wall and Cladding system



Project Title: Proposed Residential Development at Discovery Bay
Phase 14, Area N1d
Client: Hong Kong Resort
Main Contractor: Hong Kong Resort
Architect: CYS Architect Ltd.
Scope of Works: Design, Supply and Installation of Aluminium Curtain Wall ,
Windows, Sliding Door, Glass Wall and Cladding system



Project Title: Proposed Residential Development at No.16 – 34
Wood Road,Wan Chai, Hong Kong
Client: AIG+ Lai Sun JV
Main Contractor: AIG+ Lai Sun JV
Architect: CYS Architect Ltd.
Scope of Works: Design, Supply and Installation of Aluminium Curtain Wall ,
Windows, Sliding Door, Glass Wall and Cladding system



A L U M I N I U M F A B R I C A T O R

MILLION HOPE INDUSTRIES LIMITED

美亨實業有限公司

Unit 1, 2/F., Blk. A, Shatin Industrial Centre, 5-7 Yuen Shun Circuit, Shatin, N.T.. Hong Kong.

Tel: (852) 2693 0276 Fax: (852) 2602 5840 E-mail: office@millionhope.com.hk

MILLION HOPE NEW-TECH BUILDING SUPPLIES (HUIZHOU) LIMITED

美興新型建築材料（惠州）有限公司

Shangxia Development Zone ,Huanzhen Road, Shuikou District Office,

Huicheng District, Huizhou City, Guangdong Province , China

廣東省惠州市惠城區水口辦事處鎮路上霞開發區

Tel: (86) 752 2077 966 Fax: (86) 752 2077 998

www.millionhope.com.hk

